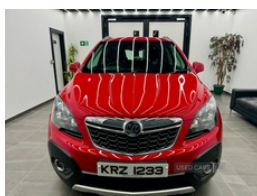


Vauxhall Mokka 1.6i Exclusiv 5dr | Nov 2015

PROVISIONALLY SOLD

£3,895



2 Owners from new
Full service history

Excellent condition, please call for full details.

HPI clear

Warranted miles

Warranty packages available - 12 / 24 / 36 months

Reserve this car today for £99

More photos are available with walk around videos. Various contact less payment options available along with online finance which can all be applied for and signed from your home.

Delivery available to your door!

Trade in's accepted.

Car sourcing available.

Second generation family business **Est in 1983**, we pride ourselves on customer service, the quality of our vehicles, competitive pricing and our comprehensive aftercare.

Visit our website for a finance quote today - www.reillymotors.co.uk

Vehicle Features

3 spoke leather steering wheel, 6 speakers, 12V power point front, 60/40 split folding rear seat, 230V rear power outlet, ABS with Brake Assist, Additional storage compartment in boot, Adjustable dashboard illumination, Air recirculation system, Anti-drill door locks, Anti submarining seats, Ashtray and cigar lighter, Assist grips, Automatic lighting control, Bluetooth system, Body colour door handles, Body colour electric folding/heated door mirrors, Boot lashing points, Boot open warning light, Centre

Miles:	111000
Fuel Type:	Petrol
Transmission:	Manual
Colour:	Red
Engine Size:	1598
CO2 Emission:	159
Tax Band:	G (£255 p/a)
Body Style:	Sport utility vehicle
Insurance group:	6E
Reg:	KRZ1233

Technical Specs

DIMENSIONS

Length:	4278mm
Width:	1777mm
Height:	Not Availablemm
Seats:	5
Luggage Capacity (Seats Up):	362L
Gross Weight:	1764KG
Max. Loading Weight:	471KG

PERFORMANCE & ECONOMY

Fuel Consum. (Urban Cold):	32.1MPG
Fuel Consum. (Extra Urban):	49.6MPG
Fuel Consum. (Combined):	41.5MPG
Fuel Tank Capacity:	54L
Number Of Gears:	5 SPEED
Top Speed:	106MPH
Acceleration 0-100 km/h:	11.9s
Engine Power BHP:	114BHP

console with armrest, Cloth upholstery, Colour keyed carpet, Combined ipod/USB connection, Cruise control + speed limiter, CSC - Cornering stability control, Cup holders, Daytime running lights, Deadlocks, Defrost switch, Delay courtesy light function, DMB digital radio, Door open warning light, Driver + front passenger lumbar support, Driver/passenger 2 stage auto adaptive airbags, Driver/passenger reading lights, Driver/passenger sunvisors with illuminated vanity mirrors, Dual zone climate control, Electric front windows + drivers one touch, Electric rear windows, Electrochrome anti dazzle rear view mirror, ESC - Electronic Stability Control + traction control, Exterior temperature gauge, Fingertip controls for audio system, Folding key, Follow me home headlights, Footwell illumination, Front and rear curtain airbags, Front and rear outer seat belt pre-tensioners, Front and rear parking sensors, Front door armrests, Front door storage bins with bottle holder, Front fog lights, Front lateral airbags, Front passenger under floor storage, Front side airbags, Fully adjustable front headrests, Heated rear window with automatic switch off, Heated rear windscreen, Heat reflecting windscreen, Height/reach adjust steering wheel, Height adjustable driver/front passenger seats, Height adjustable front seatbelts, High beam assist, Hill start assist, Illuminated air conditioned glovebox, Illuminated boot, Immobiliser, Interior courtesy light operated by all doors, ISOFIX on front passenger and rear outer seats, Leather gearknob, Lights on warning, Locking wheel bolts, Low fuel level warning light, Luggage compartment carpet, Luggage cover, Multi function trip computer, Oil level gauge, Passenger airbag deactivation system, Pollen filter, Radio frequency remote central locking, Rain sensor windscreen wipers, Rear courtesy lights, Rear door pockets with bottle holders, Rear wiper, Reclining front seats, Remote ultrasonic alarm system, Rev counter, Seat belt force limiter, Seatbelt warning, Service interval indicator, Side protection mouldings, Silver roof rails, Three 3 point rear seatbelts, Tinted glass including windscreen, Tyre pressure monitoring system, Variable power steering